

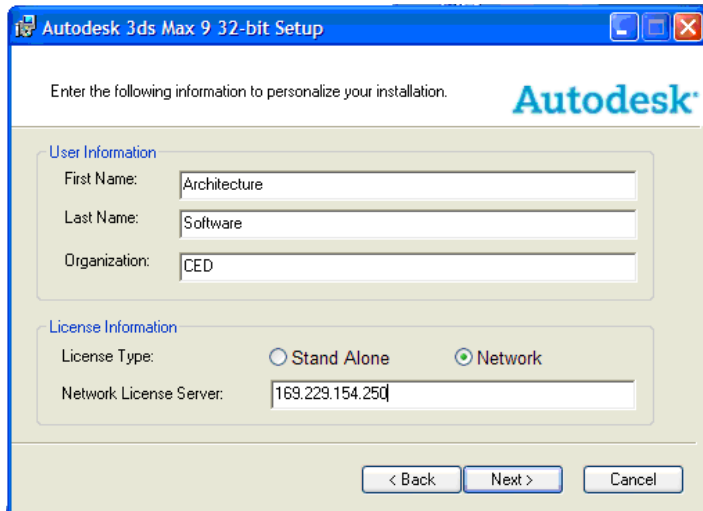
Installation Instructions

Autodesk 3D Studio Max 9

Make sure you have the Sassafras client running while performing these steps.

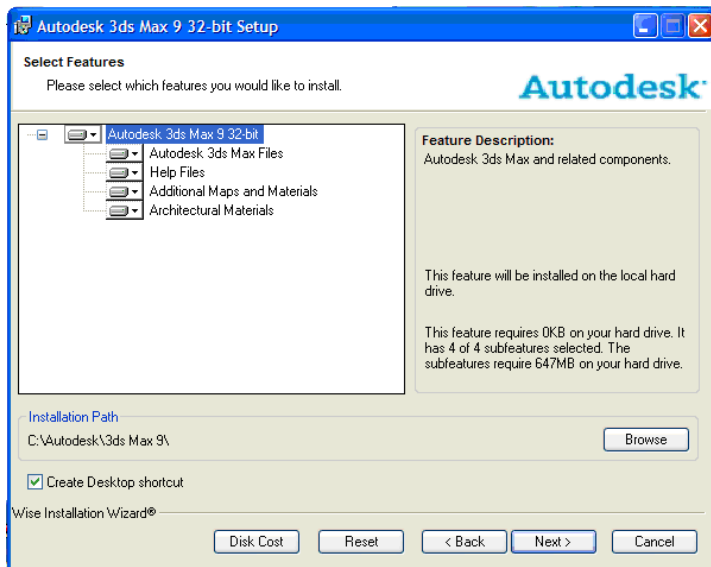
Insert the CD and select the 3DSMAX9 installer shortcut.

The installer will install several background files on your computer and bring up the splash screen for 3D Studio. Select install. When it asks for personal information and network license server enter the information provided below.



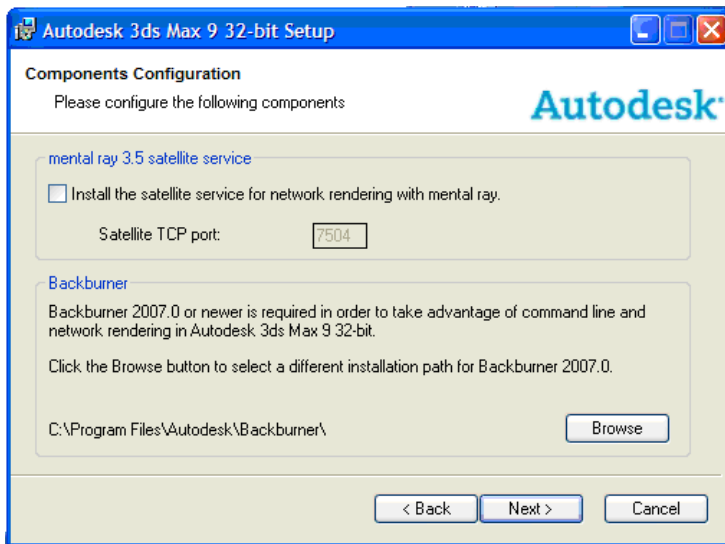
The screenshot shows the 'Autodesk 3ds Max 9 32-bit Setup' window. The title bar includes the Autodesk logo and window controls. The main area contains the text 'Enter the following information to personalize your installation.' followed by the Autodesk logo. Below this are two sections: 'User Information' and 'License Information'. The 'User Information' section has three text input fields: 'First Name' with 'Architecture', 'Last Name' with 'Software', and 'Organization' with 'CED'. The 'License Information' section has two radio buttons: 'Stand Alone' (unselected) and 'Network' (selected). Below the radio buttons is a text input field for 'Network License Server' containing '169.229.154.250'. At the bottom are three buttons: '< Back', 'Next >', and 'Cancel'.

On the select features menu do not make any changes, simply select next

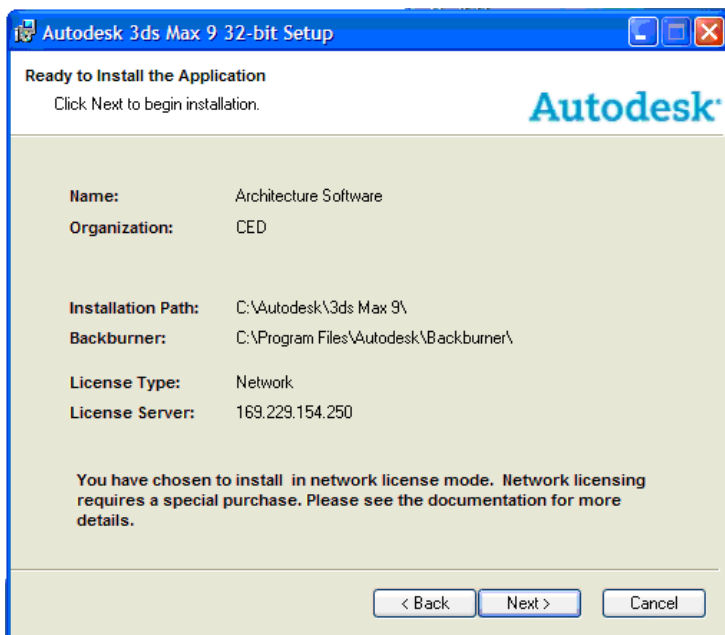


The screenshot shows the 'Autodesk 3ds Max 9 32-bit Setup' window at the 'Select Features' step. The title bar includes the Autodesk logo and window controls. The main area contains the text 'Please select which features you would like to install.' followed by the Autodesk logo. Below this is a tree view on the left showing the installation structure: 'Autodesk 3ds Max 9 32-bit' (selected), 'Autodesk 3ds Max Files', 'Help Files', 'Additional Maps and Materials', and 'Architectural Materials'. To the right of the tree view is a 'Feature Description' section with the text: 'Autodesk 3ds Max and related components. This feature will be installed on the local hard drive. This feature requires 0KB on your hard drive. It has 4 of 4 subfeatures selected. The subfeatures require 647MB on your hard drive.' Below the tree view is an 'Installation Path' section with the text 'C:\Autodesk\3ds Max 9\' and a 'Browse' button. At the bottom left is a checkbox labeled 'Create Desktop shortcut' which is checked. At the bottom are five buttons: 'Disk Cost', 'Reset', '< Back', 'Next >', and 'Cancel'.

On the components configuration menu **unselect** the Install satellite service support for network rendering with mental ray option and select next



Your final configuration screen should look like this:



Select next and the installer will complete installation.