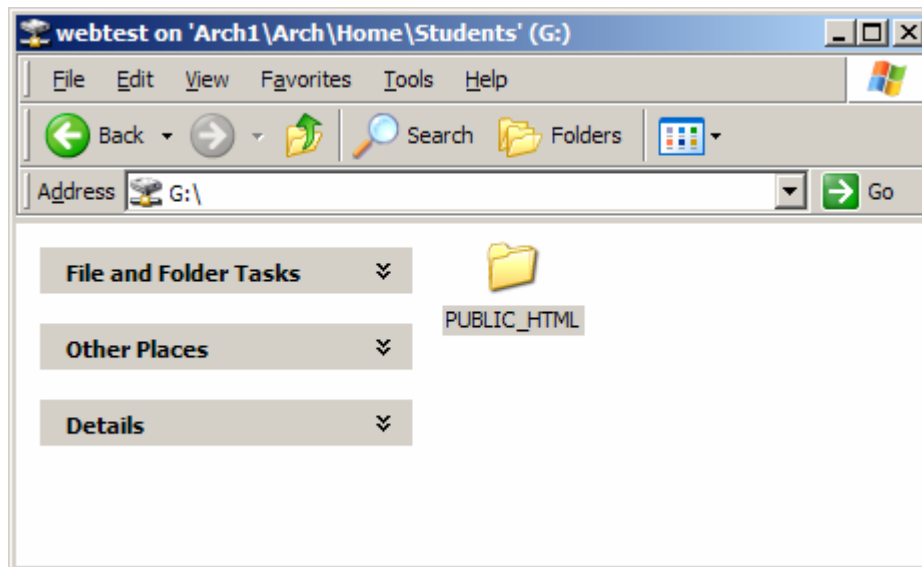


## ARCH1 WEB PAGE PUBLISHING INSTRUCTIONS

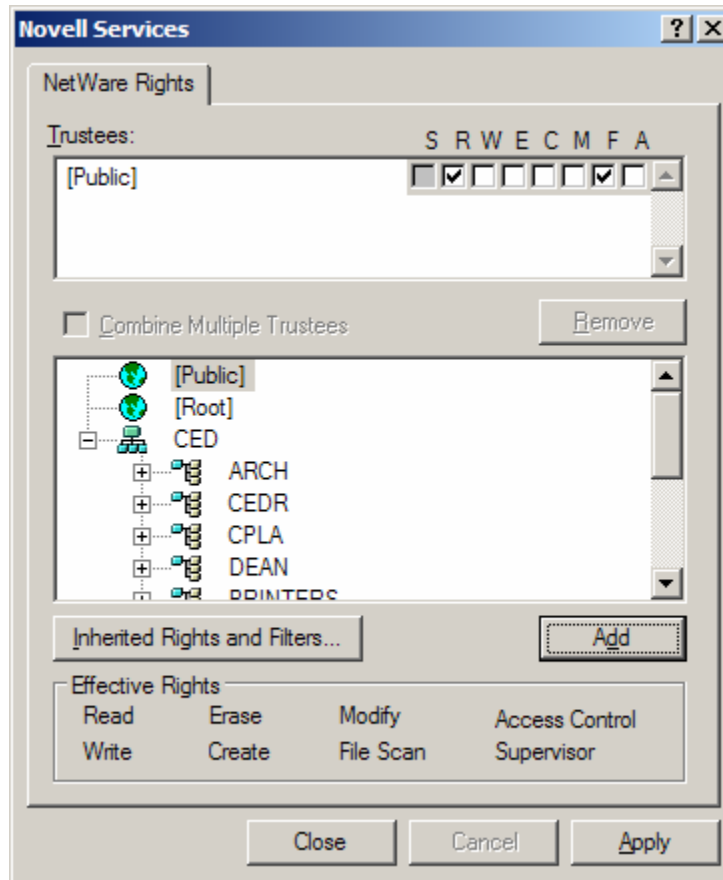
~~~~~  
**IMPORTANT:** *These instructions were written on a Windows XP workstation, running Internet Explorer. Other OS/browser combinations may result in different icons or window appearance styles. Mac users can perform analogues of steps 2 and 4-6 natively; steps 1 and 3 must be performed from a Windows workstation (or inside of a Windows shell) with the Novell client installed. Lab machines are fine, as are studio workstations.*  
~~~~~

To create a web page of your own, visible to all on the web to see, using your Novell home directory as the host, simply follow these instructions:

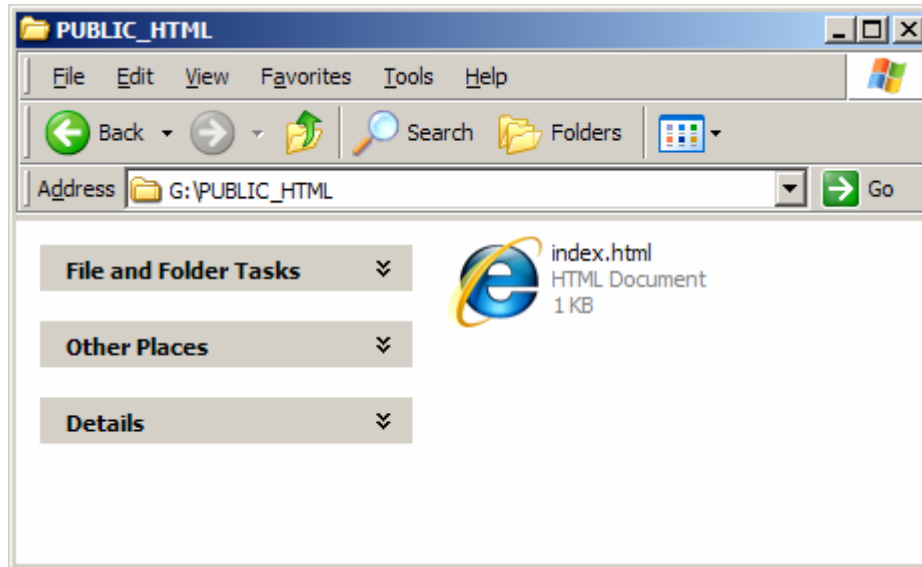
- 1) Login to Novell.
- 2) Open your home directory (commonly known as your “G drive”). Create a folder called PUBLIC\_HTML.



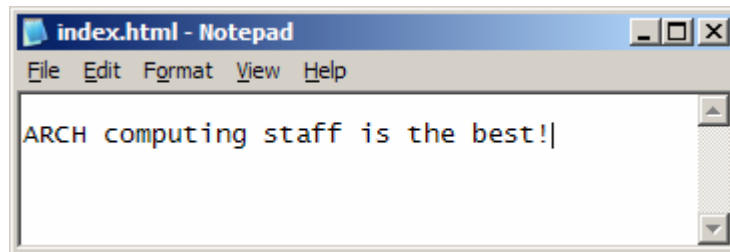
- 3) For the folder PUBLIC\_HTML, grant RF rights to [Public] as follow:
  - a. Right-click the folder, and choose “Trustee Rights...”
  - b. Scroll up the list on the bottom of the “Novell Services” window, and choose [Public]



- c. [Public] should now appear in the top area of the “Novell Services” window with R and F (Read and Filescan) access. Click “Close”.
- 4) Create a file in the PUBLIC\_HTML folder called INDEX.HTML as follow:
  - a. Open the PUBLIC\_HTML folder and right-click in the middle of the pane and choose “New”, then “Text document”.
  - b. Name the file INDEX.HTML.

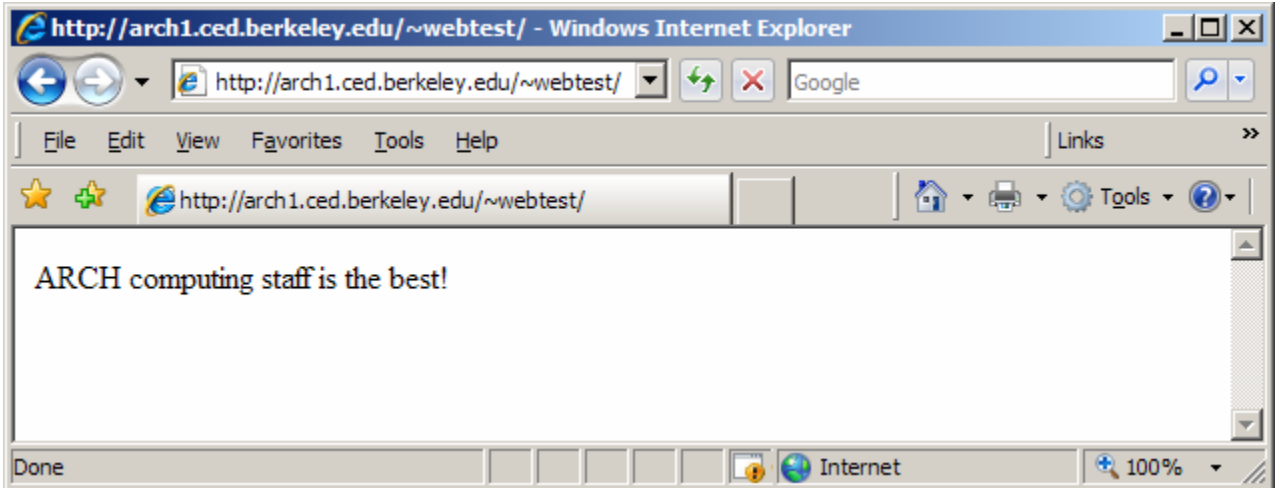


- 5) INDEX.HTML is your homepage; you will edit it as you wish (instructions on how to code an HTML page are beyond the scope of this instruction set). To create a sample page (and to test that what you have done works properly), do the following:
  - a. Right-click INDEX.HTML, and choose "Open with". Choose Notepad.
  - b. Type a sample line of text, and choose File, Exit. Click Yes to confirm the save.



- 6) To view your new personal web page, open a web browser and point it to your new personal URL:

[http://arch1.ced.berkeley.edu/~\[your username here, without brackets\]](http://arch1.ced.berkeley.edu/~[your username here, without brackets])



(Only the files and folders in the PUBLIC\_HTML folder are visible to the public; folders and files *above* them [hierarchically speaking] are not visible.)

**Please remember that the University's regulations apply, as far as copyright protection and computing use standards – don't run afoul of them. If you have any questions about these regulations, please contact a member of the Department computing staff and we can discuss it further.**

If you run into problems, or if you find mistakes in this documentation, or are simply unable to make it work, please e-mail andres[at]berkeley[dot]edu and I will be of assistance.