

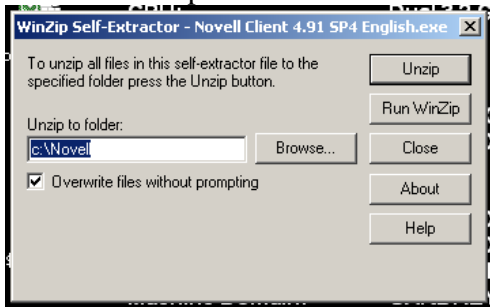
# How to Download Software:

## 1. Download Novell

- Go to [www.novell.com](http://www.novell.com) then click on “download” at top right hand corner.
- If you are using windows XP – download [Novell Client 4.91 SP4 for Windows](#)
- If you are using Vista – download [Novell Client for Windows Vista](#)
- You need to create one user login name/password in order to download it.

## 2. Installing Novell

- Click on “unzip”



- Then go to My Computer → C drive → Novell Folder → Novell Client 4.91 SP4 English folder → double-click on [setupnw.exe](#) to install
- Select typical installation and click next to install. Then restart the machine.

- Check “**workstation only**” checkbox then click ok to login. (If you have a windows password, type your password then login) (For Vista User: click on [login to Novell](#))

## 4. Login to Novell

- Right click on red “N” icon and then click on Netware Login
- Click on Advanced
  - User name – Novell login name (first letter of your first name and last name, all lower case)
  - Password – student ID
  - Tree – ced-tree
  - Context: [students.arch.ced](#)
  - Server: [arch1.ced.Berkeley.edu](#)
- Click “OK” to login

## 5. Download/Install Software

- Go to My computer → S drive (or called Software drive)
- Find the software you need and read the installation instruction document inside
- You need to install Sassfrass before you can install any other program.
- You can uninstall Novell after you are done installing all the programs you need

**Troubleshoot:** If you can not login to Novell, turn off your firewall/anti-virus program

**Firewall:** Start menu → Settings → Control Panel → Windows Firewall → check “off”

**Symantec:** right click on the Symantec icon at the bottom right hand corner → Disable Symantec Firewall

**Anti-virus program:** right click on the Anti-virus icon at the bottom right hand corner → Disable anti-virus program