

BALSA WOOD

VARIATIONS

Sheets, Rods

DESCRIPTION

Tan, heavy grained and slightly textured wood.

USES

Balsa wood is easier to cut and lighter than basswood, but much more difficult to make into a good looking model. The very apparent and sloppy looking grain keeps balsa in the realm of mostly massing or sketch models. Because the wood is so light, it also distorts under pressure from anything but the sharpest blade, making clean joins more difficult to make. Can be laser cut.

MANUFACTURE

Trees harvest for balsa wood can be found in northern South America, and 90% of all balsa wood comes from Ecuador. These trees don't grow in farms, and tend to be harvested directly from the jungle. Balsa wood enjoys a relatively quick regrowth rate of 6-10 years.

NOTABLE INGREDIENTS

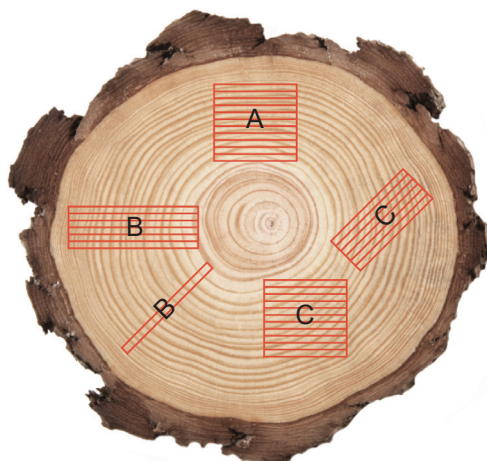
Ochroma Lagopus (Balsa Wood Tree)

DISPOSAL

Usable scraps to Reuse Stations, unusable scraps to wood dumpster behind shop. Untreated wood will completely biodegrade without any issue.

SAFETY NOTES

Always be careful when cutting- use a sharp blade. Almost all cuts are best made with multiple, low pressure passes- this reduces the chance of slipping and increases the precision of the cut.



A - tangent



B - quarter



C - random



Grain Types